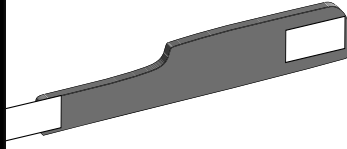




### ARTHRITIC COLLAR - 3" height

Specially designed to fasten in the front for easy application. Cut at a comfortable 3" height for the shorter mature neck.. Constructed of a foam cushion covered with stockinet and has a hook and loop closure .

T10 S 10-12 M 12-15 L 14-17 XL 16-19 \$ 8.45

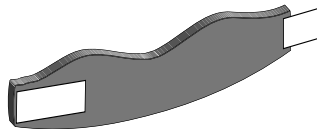


### CERVICAL COLLAR - Mid Contour

This collar is designed for semirigid immobilization. Constructed of a comfortable medium density foam, covered with stockinet and has a hook and loop closure . The height is proportional to the length of the collar.

T11 XS 10-12 (2.5") S 12-14 (3") M 14-16 (3.25")  
L 16-18 (3.5") XL 18-20 (3.75") \$ 4.81

T11U Universal 12-18 (3.5") \$ 4.81



### CERVICAL COLLAR - Uniform Contour

This collar is designed for semirigid immobilization. Constructed of a comfortable medium density foam, covered with stockinet and has a hook and loop closure . The height is uniform throughout the length of the collar. May be ordered sized or universal. Order by height and length.

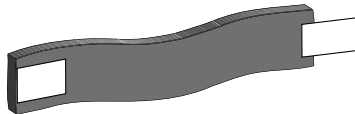
T112.5 2.5" height T113.5 3.5" height

T113 3" height T114 4" height

T115 5" height

XS 10-12 S 12-14 M 14-16 L 16-18 XL 18-20 \$ 4.81

Universal 12-18 \$ 4.81



### CERVICAL COLLAR - Low Contour

The low contour conforms to the lines of the jaw and chin. The cut away for the throat is more comfortable for some patients. Constructed of a comfortable medium density foam, covered with stockinet and has a hook and loop closure . The height is proportional to the length of the collar.

T12 S 10-12 (2.75") M 12-15 (3") L 14-17 (3.25")

XL 16-19 (3.5") \$ 7.38

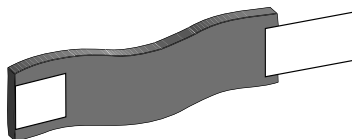


### CERVICAL COLLAR - High Contour

This collar is designed for semirigid immobilization. Constructed of a comfortable medium density foam, covered with stockinet and has a hook and loop closure . The height is uniform throughout the length of the collar. The height is proportional to the length of the collar.

T13 XS 9-11 (2.75") S 11-12.5 (3") M 12-14.5 (3.5")

L 14-17 (3.75") XL 16.5-19 (3.75") \$ 7.38





## SERPENTINE COLLAR

Very similar to the T13 but, with a more pronounced serpentine shape. This collar is designed for semirigid immobilization. Constructed of a comfortable medium density foam, covered with stockinet and has a hook and loop closure . The height is proportional to the length of the collar.

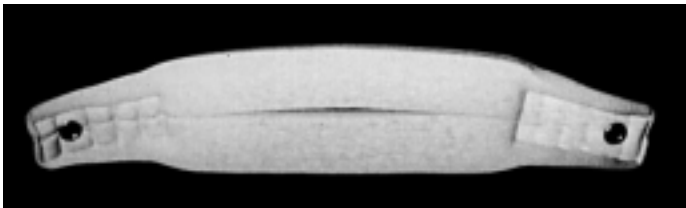
T14 S 10-12 (3.25") M 12-14 (3.5") L 14-16 (4")  
 XL 16-18 (4") \$ 8.45



## FLEXION COLLAR- High Back

This collar is designed to maintain the patients neck in the maximum flexion position. Designed for semirigid immobilization. Constructed of a comfortable medium density foam, covered with stockinet and has a hook and loop closure . The height is proportional to the length of the collar.

T15 XS 8-10 (Chin 1.5" Back 3.75") S 10-12 (Chin 2.25" Back 4") M 12-14 (Chin 2.25" Back 4.5") L 14-17 \*Chin 2.5" Back 4.5") XL 16"-19") Chin 2.75" Back 4.5") \$ 13.37



## SPLIT FOAM COLLAR

Designed to be used in either the extension or flexion position. The grommets in each end allow the collar to be also used as a head halter for cervical traction. Constructed of a comfortable medium density foam, covered with stockinet and has a hook and loop closure .

T16 S 12-14 M 14-16 L 16-18 XL18-20 \$10.59



## BELMONT COLLAR - with Trach Opening

1812	2.25"	Small	1822	2.25"	Medium
1832	2.25"	Large			
1813	3.25"	Small	1823	3.25"	Medium
1833	3.25"	Large			
1814	4.25"	Small	1824	4.25"	Medium
1824	4.25"	Large			
1815	5.25"	Small	1825"	5.25"	Medium
1835	5.25"	Large			\$ 20.33



## EXTRACTION COLLAR - Universal

Designed for emergency conditions. For use by Paramedics in awkward situations.

T1811 Universal \$ 10.11



### CLAVICLE STRAP - Four Buckle Adjustment

This device has four buckles for easy, accurate adjustment, they are on a generous back pad to protect the patients, It has two comfortable underarm cushions covered with stockinet. The foam pads allow for a modest stretch for patient comfort.

T51            Infant , Ped, S M L XL Universal            \$ 6.31



### CLAVICLE STRAP - 4 Way non-stretch

This device also has four buckles for easy, accurate adjustment. They are on a generous back pad to protect the patients, It has two comfortable underarm cushions covered with stockinet. The non stretch webbing is continuous from buckle to buckle.

T511            Infant , Ped, S M L XL Universal            \$ 6.31



### SHOWER CLAVICLE STRAP

This unique clavicle strap is constructed with soft closed cell foam underarm pads. The nature of this material is that it does not absorb moisture i.e. perspiration. This means that it does not need to be removed for bathing, which solves the age old problem of the struggle between patient compliance and hygiene. This material is very comfortable to wear and has a very low profile, so it can be worn inconspicuously under clothing. It has hook and pile closures and an elongated back pad with a triangle buckle.

May be ordered with front adjustable straps.

T515            Ped, S M L XL            \$ 11.50



### CLAVICLE STRAP- Front Closure

This unusual clavicle strap solves a very difficult problem for those who need to adjust the clavicle strap alone. The design extends the length of the webbing straps allowing the strap to pass through a loop on the back pad and return back over the shoulder to fasten with hook and loop in the front, where a patient may easily adjust the clavicle strap to the proper tension.

T5151            S M L XL            \$ 11.50



### CLAVICLE STRAP - Velcro Closure

This support offers the combined comfort of both felt and a thin foam cushion for patient comfort. This support has a heavy felt back pad to protect the patients back and a velcro closure for a more comfortable fit and easy adjustment.

T516

Ped, S M L XL

\$ 11.50



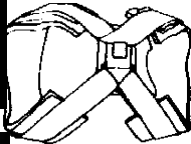
### CLAVICLE STRAP - Heavy Felt

The felt axilla pads are covered with stockinet for patient comfort. This support has a large felt back pad to protect the patients back and a two buckle closure.

T517

Ped, S M L XL

\$ 10.16



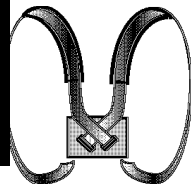
### CLAVICLE STRAP- Kodel

This support is constructed with Kodel padded axilla straps for maximum patient comfort. The wide webbing straps, velcro closures and elongated back pad make for a more comfortable fit and easy adjustments. May be ordered with front adjustable straps.

T518

Ped, S M L XL

\$ 11.50



### CLAVICLE STRAP- Basic Figure Eight

Constructed of 1.5" wide webbing and two buckle closures on a felt back pad.

T519

Ped S M L XL

\$ 5.27

May be ordered with a foam pad to cover the straps.

T519P

Ped S M L XL

\$ 6.24



### CLAVICLE STRAP- Infant

Constructed of thin foam axilla pads and hook and loop closures.

T519 Infant

INFANT ONLY

\$ 5.27

## KNEE IMMOBILIZER - ULTRA LIGHT

Lightweight, Comfortable, Cool, Porous. Tartan introduces the light knee support. This material wicks away perspiration which promotes healing and enhances patient comfort and compliance. It has three generous foam inserts for positive skin traction and the design of the velcro closures offers considerable versatility, including the ability to fit the extreme tapered leg. This brace may be used following surgery, ligament injuries, fractured or dislocated patella and Osgood Shlatter's Disease.

	Height	Circumference	
T40A	12"	Ped S M L XL XXL	\$ 15.94
T41A	18"	Ped S M L XL XXL	\$ 20.22
T42A	20"	Ped S M L XL XXL	\$ 22.36
T43A	24"	Ped S M L XL XXL	\$ 26.64
T44A	27"	S M L XL XXL	\$ 29.94

all of the above may be ordered with a 6" elastic patella closure for an additional \$ 1.00

## KNEE IMMOBILIZER - DELUXE

Constructed of the traditional sturdy canvas/foam/flannel material. It has three generous foam inserts for positive skin traction and the design of the velcro closures offers considerable adjustability, including the ability to fit the extreme tapered leg. This brace may be used following surgery, ligament injuries, fractured or dislocated patella and Osgood Shlatter's Disease.

	Height	Circumference	
T400	12"	Ped S M L XL XXL	\$ 19.15
T410	18"	Ped S M L XL XXL	\$ 22.36
T420	20"	Ped S M L XL XXL	\$ 24.50
T4302	22"	Ped S M L XL XXL	\$ 25.57
T430	24"	S M L XL XXL	\$ 27.71
T440	24"	S M L XL XXL	\$ 29.85

all of the above and may be ordered with a 6" elastic patella closure for an additional \$ 1.00

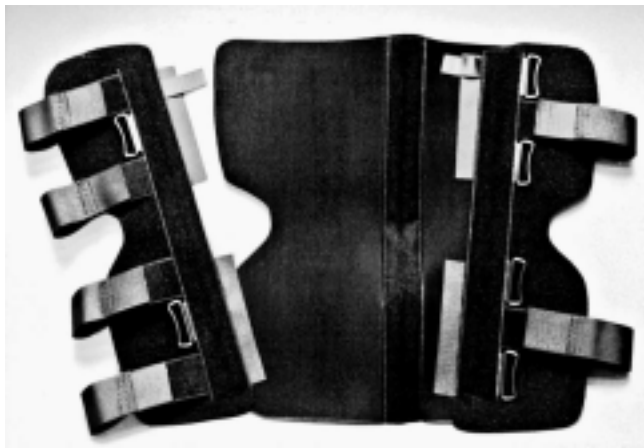
## KNEE IMMOBILIZER - ECONOMY

Constructed of canvas/foam material. It has 3 posterior stays and one medial and lateral stay. It is a very efficient splint. This brace may be used following surgery, ligament injuries, fractured or dislocated patella and Osgood Shlatter's Disease.

	Height	Circumference	
T411	18"	Ped S M L XL XXL	\$ 17.12
T421	20"	Ped S M L XL XXL	\$ 19.26
T431	24"	Ped S M L XL XXL	\$ 21.40

Circumference sizing measure 4" above patella

Ped	12 - 15"	L	18 - 21"
S	14 - 17"	XL	20 - 23"
M	16 - 19"	XXL	22 - 25"



### 3 PANEL - UNIVERSAL

The three panel construction means no trimming and an accurate fit every time. The posterior panel has 3 stays and the two sides have two medial and lateral stays. The two side panels attach to the posterior panel with velcro. The design of the velcro closures offers considerable versatility, including the ability to fit the extreme tapered leg. This brace may be used following surgery, ligament injuries, fractured or dislocated patella and Osgood Shlatter's Disease.

	Height	Circumference	
T423U	20"	Universal	\$ 29.42
T433U	24"	Universal	\$ 36.91



all of the above may be ordered with a 6" elastic patella closure for an additional \$ 1.00

### KNEE IMMOBILIZER - UNIVERSAL

This velcro sensitive/foam material allows excellent versatility in a trim to fit knee immobilizer. It has three posterior stays and two moveable medial and lateral stays. Place them exactly where you need them. The straps are circumferential for maximum compression.

	Height	Circumference	
T40U	12"	Universal	\$ 15.94
T41U	18"	Universal	\$ 21.29
T42U	20"	Universal	\$ 22.36
T43U	24"	Universal	\$ 26.64
T44U	27"	Universal	\$ 29.94

all of the above may be ordered with a 6" elastic patella closure for an additional \$ 1.00



### KNEE IMMOBILIZER - BENT 30° & 45°

This splint immobilizes the knees in 30 or 45 degrees of flexion. The medial and lateral stays are flexed to 30 or 45 degrees. This splint is most useful in the post operative period after medial collateral ligament and anterior cruciate ligament repair.

	Height	Circumference	
T4330-30°	24"	Universal	\$ 51.36
T4345-45°	24"	Universal	\$ 51.36



### ELASTIC KNEE SUPPORT

This elastic knee wrap is 10" tall and has a patella opening and hook and loop closures. It has medial and lateral spiral stays.

T40	10"	S M L XL	\$ 12.30
-----	-----	----------	----------